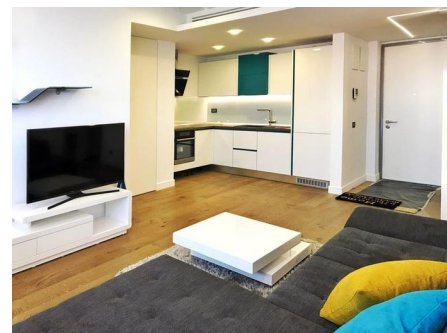


## Luxury 2 room apartment for rent in Herastrau

900 € / lună sau 12 € / lună / mp



- 1 dormitoare
- Decomandat
- An construcție: 2015
- 1 dormitoare; 1 băi; 1 terase;
- Etaj : 4 / P
- Supraf. utilă: 75 mp
- 1 locuri de parcare

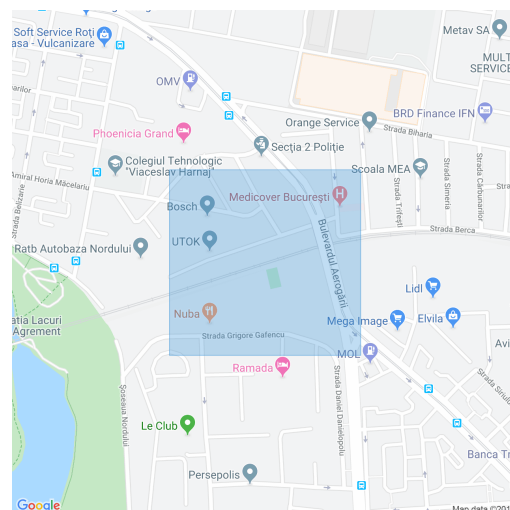
Today we have the pleasure to recommend you for rent a beautiful 1 bedroom apartment in a brand new condominium next to Herastrau Park. Key features of the property include:

- building finalized at the end of 2015
- 4th floor, Gf + 12F
- partition: 1 living with dining, 1 bedroom, 1 bathroom, 1 kitchen, 1 terrace
- luxury finishes and furniture
- price includes 1 underground parking space
- the condominium offers access to spa, fitness, stores, large garden

Cortina Residence is a residential compound located in the Northern part of Bucharest, in district 1; it is situated close to Herastrau Park, and it also offers easy access to Bucuresti Ploiesti highway / the city belt / Otopeni Airport or to the city center, by means of Nicolae G. Caramfil Street, Barbu Vacarescu Street, Floreasca Street or Aviatorilor Boulevard.

The 64,000 m2 built area, comprising 270 apartments and 426 parking spaces, making Cortina Residence, the largest residential project to be delivered in the 1st District of Bucharest.

### Localizare:



**Anna Baliun**  
Real Estate Broker

**0762722312**  
anna@palaceestate.ro